

Gruppo Utenti **MARC 21**

5° Incontro GUMARC 21

MARCEdit 6.1: nuove funzionalità
che guardano al futuro

Zeno Tajoli – CINECA
z.tajoli@ceneca.it

Firenze, 30 ottobre 2015



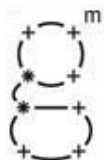
museo
galileo

Istituto e Museo
di Storia della Scienza



Punti trattati

- Un software che si evolve
 - Nuova interfaccia iniziale
 - Strumento di aiuto per RDA
 - Validazione delle intestazioni
 - Costruisci un nuovo campo
 - Cambiamenti sulla fusione dei records
 - Miglioramenti per la sostituzione di stringhe
 - Validare ISBN
 - Collaborazione con BibFrame (MARCNext)
 - La traduzione automatica
 - Nuovi video
 - Riscrittura per supporto a Mac



museo
galileo

Istituto e Museo
di Storia della Scienza

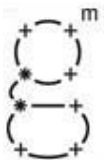
5° Incontro GUMARC 21

GUMARC 21
Gruppo Utenti Marc21

■ Evoluzione

Si parte da ottobre 2012

- 5.8 (ultimi update) - 5.9 - 6.0 - 6.1
- Il software evolve per modifiche progressive
 - Bug fix e nuove funzionalità
 - Maggiori opzioni nei diversi strumenti
 - Evoluzione verso la programmabilità
 - RegExe e linea di comando
- Update una volta al mese circa
- Forte presenza di supporto sulla mailing-list
- Documentazione sul blog <http://blog.reeset.net>



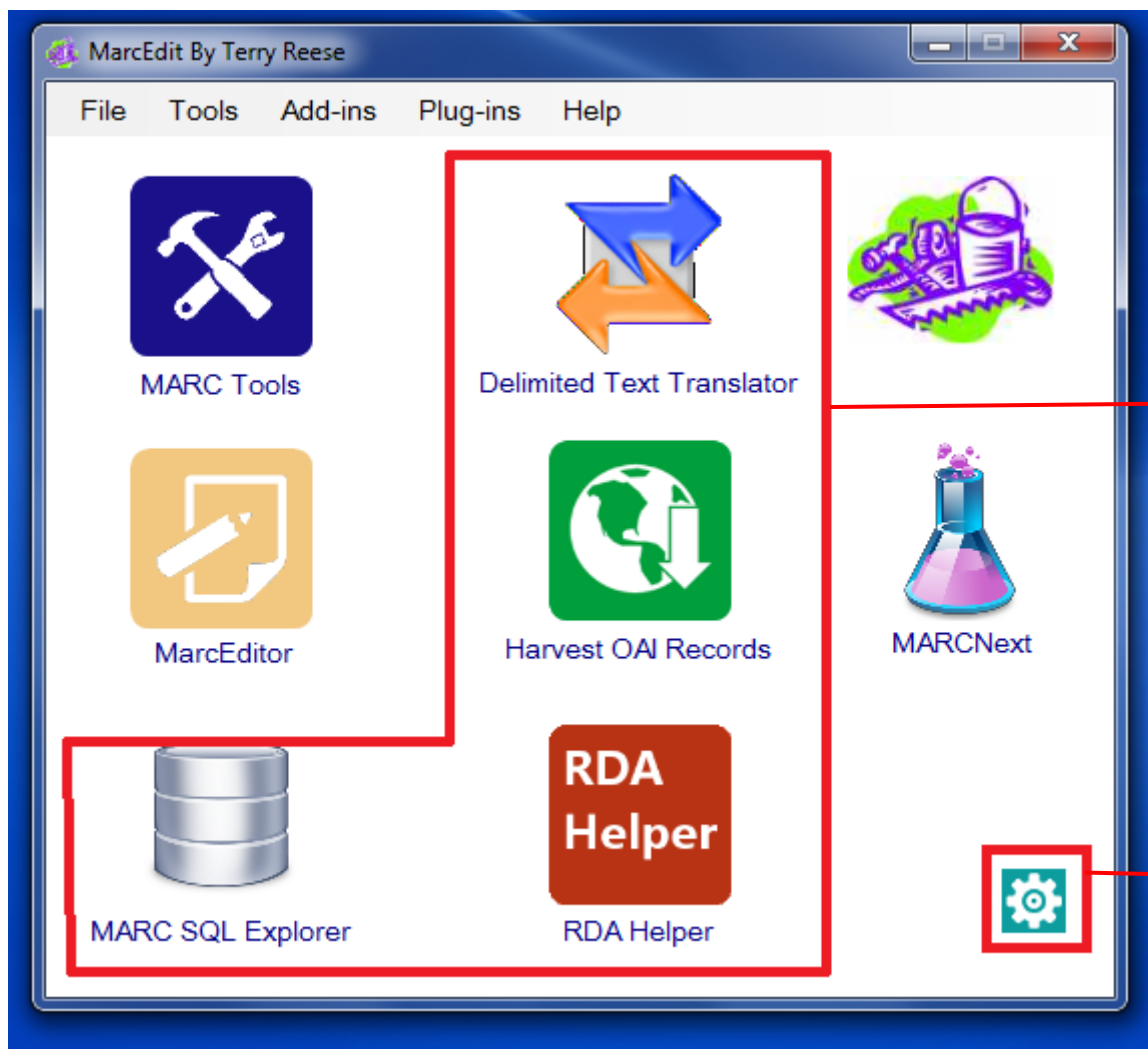
museo
galileo

Istituto e Museo
di Storia della Scienza

5° Incontro GUMARC 21

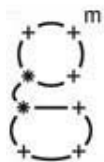
GUMARC 21
Gruppo Utenti Marc21

Interfaccia iniziale



Funz. personalizzabili

Configurazione



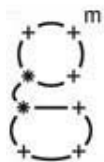
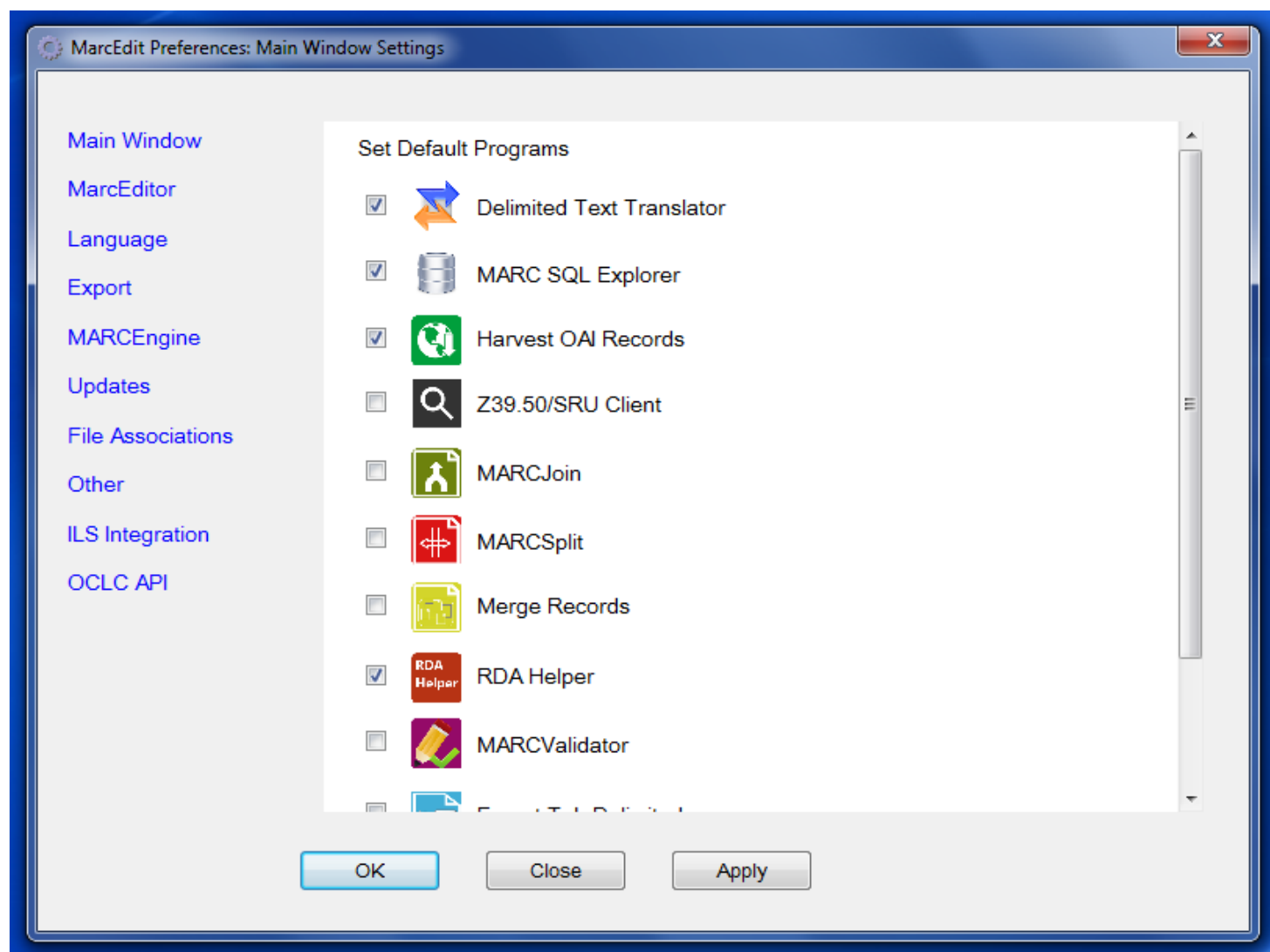
museo
galileo

Istituto e Museo
di Storia della Scienza

5° Incontro GUMARC 21

GUMARC 21
Gruppo Utenti Marc21

Interfaccia iniziale



museo
galileo

Istituto e Museo
di Storia della Scienza

5° Incontro GUMARC 21

GUMARC 21
Gruppo Utenti Marc21

RDA

The screenshot displays the RDA Helper application window. It features a list of checkboxes for adding and evaluating RDA fields. The 'Add' section includes options for Content Type, Media Type, Carrier Type, Sound Characteristics, Project Characteristics, Video Characteristics, Digital Characteristics, Form of Work, and Other. The 'Evaluate' section includes an option for 260/264 and a sub-option for always using copyright symbols. A second list of checkboxes includes Qualifying Information, Modify 040, Process the 502, Delete GMD, Generate GMD, and Expand Abbreviations. Below these lists are input fields for 'Source' and 'Save', and buttons for 'OK' and 'Close'. Two Notepad windows are open at the bottom, showing RDA field codes and abbreviations.

RDA Helper

- Add 336 -- Content Type
- Add 337 -- Media Type
- Add 338 -- Carrier Type
- Add 344 -- Sound Characteristics
- Add 345 -- Proj. Characteristics
- Add 346 -- Video Characteristics
- Add 347 -- Digital Characteristics
- Add 380 -- Form of Work
- Add 381 -- Other
- Evaluate 260/264
 - Always use ©, ® symbols

- Qualifying Information (015/020/024/027)
- Modify 040 -- add \$erda
- Process the 502
- Delete GMD
- Generate GMD
- Expand Abbreviations

Source:

Save:

Select: [All](#) | [None](#)

OK **Close**

rda_fields.txt - Blocco note

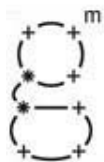
File Modifica Formato Visualizza ?

```
=245  
=260  
=300  
=5
```

rda_abbrev.txt - Blocco note

File Modifica Formato Visualizza ?

```
Abdr.   Abdruck  
abgedr. abgedruckt  
Abt.    Abteilung  
acc.    accompaniment  
afd.    afdeling
```



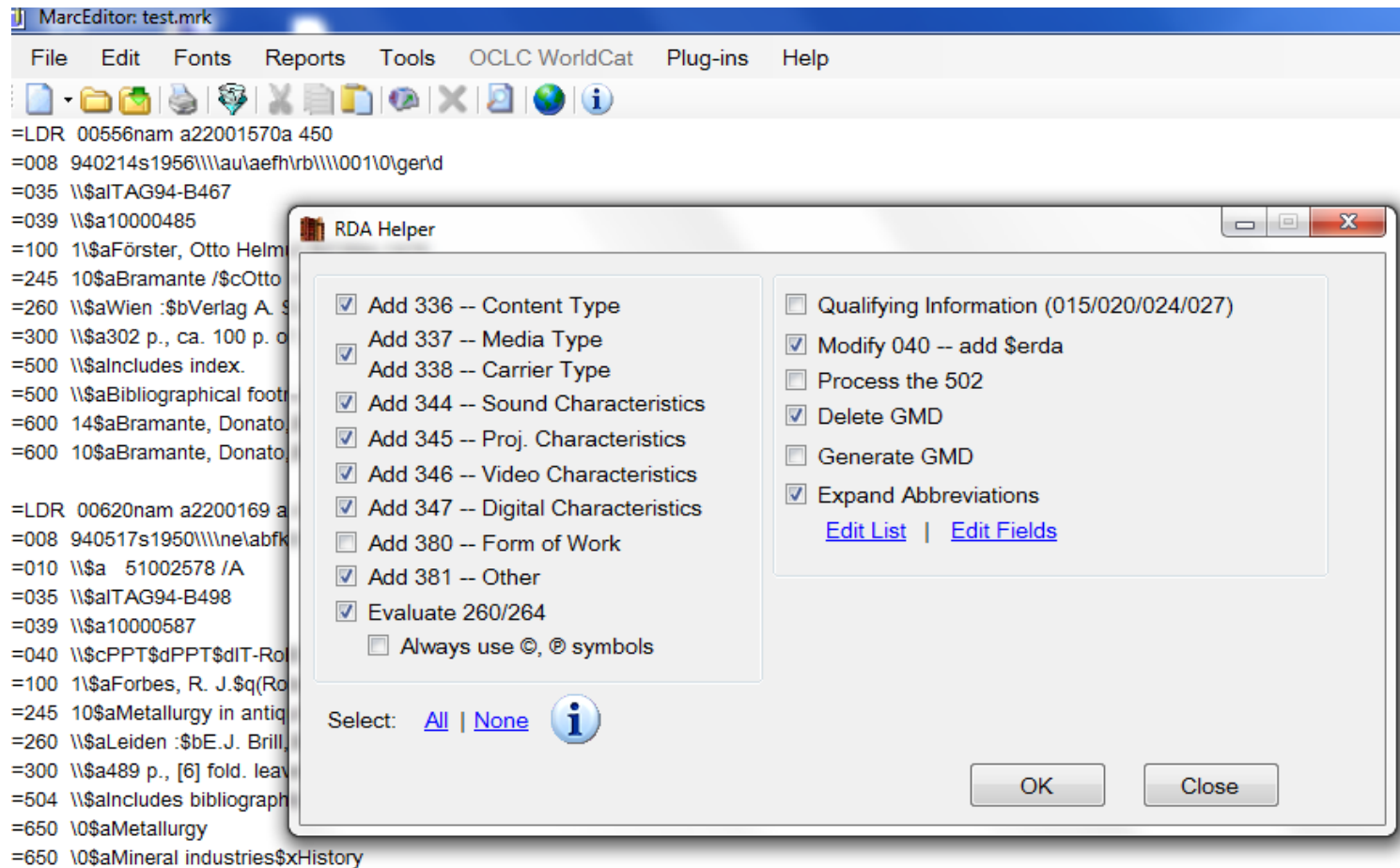
museo
galileo

Istituto e Museo
di Storia della Scienza

5° Incontro GUMARC 21

GUMARC 21
Gruppo Utenti Marc21

RDA



- <http://blog.reeset.net/archives/1080> <http://blog.reeset.net/archives/1085>
- <http://blog.reeset.net/archives/1151> <http://blog.reeset.net/archives/1152>



museo
galileo

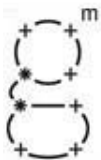
Istituto e Museo
di Storia della Scienza

5° Incontro GUMARC 21

GUMARC 21
Gruppo Utenti Marc21

=LDR 00556nam a22001570a 450
 =008 940214s1956\\au\ae fh\rb\\001\0\ger\d
 =035 \\\$aITAG94-B467
 =039 \\\$a10000485
 =100 1\\\$aFörster, Otto Helmut,\$d1894-1976
 =245 10\\\$aBramante /\$cOtto H. Förster.
 =260 \\\$aWien :\$bVerlag A. Schroll,\$cc1956.
 =300 \\\$a302 p., ca. 100 p. of plates :\$bill., facsimis., plans ;\$c29 cm.
 =500 \\\$aIncludes index.
 =500 \\\$aBibliographical footnotes.
 =600 14\\\$aBramante, Donato,\$d1444?-1514
 =600 10\\\$aBramante, Donato,\$d1444?-1514\$xCriticism and interpretation

=LDR 00620nam a2200169 a 450
 =008 940517s1950\\ne\abfk\r\\001\0\eng\d
 =010 \\\$a 51002578 /A
 =035 \\\$aITAG94-B498
 =039 \\\$a10000587
 =040 \\\$cPPT\$dPPT\$dIT-RoBS
 =100 1\\\$aForbes, R. J.\$q(Robert James),\$d1900-
 =245 10\\\$aMetallurgy in antiquity :\$ba notebook for archaeologists and technologists /\$cby R.J. Forbes.
 =260 \\\$aLeiden :\$bE.J. Brill,\$c1950.
 =300 \\\$a489 p., [6] fold. leaves of pl. :\$bill., maps, tables ;\$c25 cm.
 =504 \\\$aIncludes bibliographical references and index.
 =650 \0\\\$aMetallurgy
 =650 \0\\\$aMineral industries\$xHistory



museo
galileo

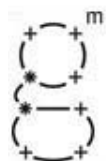
Istituto e Museo
di Storia della Scienza

5° Incontro GUMARC 21

GUMARC 21
Gruppo Utenti Marc21

RDA

=LDR 0057156nam a2200120570ai 450 ;
=008 940214s1956\\au\ae\fh\rb\\001\0\ger\d ;
=035 \\\$aITAG94-B467 ;
=039 \\\$a10000485 ;
=100 1\\\$aFörster, Otto Helmut,\$d1894-1976 ;
=245 10\$aBramante /\$cOtto H. Förster. ;
=2604 \\1\$aWien :\$bVerlag A. Schroll,\$c[1956] ;
=264 \\4\$c©1956 ;
=300 \\\$a302 p-ages, circa: 100 p-ages of plates :\$bill-ustrations, facsimiles, plans ;\$c29 cm. ;
=336 \\\$atext\$btxt\$2rdacontent ;
=337 \\\$aunmediated\$bn\$2rdamedia ;
=338 \\\$avolume\$bnc\$2rdacarrier ;
=500 \\\$aIncludes index. ;



museo
galileo

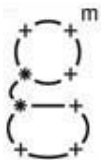
Istituto e Museo
di Storia della Scienza

5° Incontro GUMARC 21

GUMARC 21
Gruppo Utenti Marc21

RDA

=LDR 007620nam a2200169205 ai 450 ;
=008 940517s1950\\ne\abfk\r\\001\0\eng\d ;
=010 \\\$a 51002578 /A ;
=035 \\\$aITAG94-B498 ;
=039 \\\$a10000587 ;
=040 \\\$cPPT\$dPPT\$dIT-RoBS**\$beng\$Serda** ;
=100 1\\\$aForbes, R. J.\$q(Robert James),\$d1900- ;
=245 10\$aMetallurgy in antiquity :\$ba notebook for archaeologists and technologists /\$c
=2604 \\1\$aLeiden :\$bE.J. Brill,\$c1950. ;
=300 \\\$a489 p-ages, [6] fold-ed leaves of pl. :\$bill-ustrations, maps, tables ;\$c25 cm. ;
=336 \\\$atext\$btxt\$2rdacontent ;
=337 \\\$aunmediated\$bn\$2rdamedia ;
=338 \\\$avolume\$bnc\$2rdacarrier ;
=504 \\\$aIncludes bibliographical references and index. ;



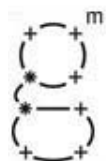
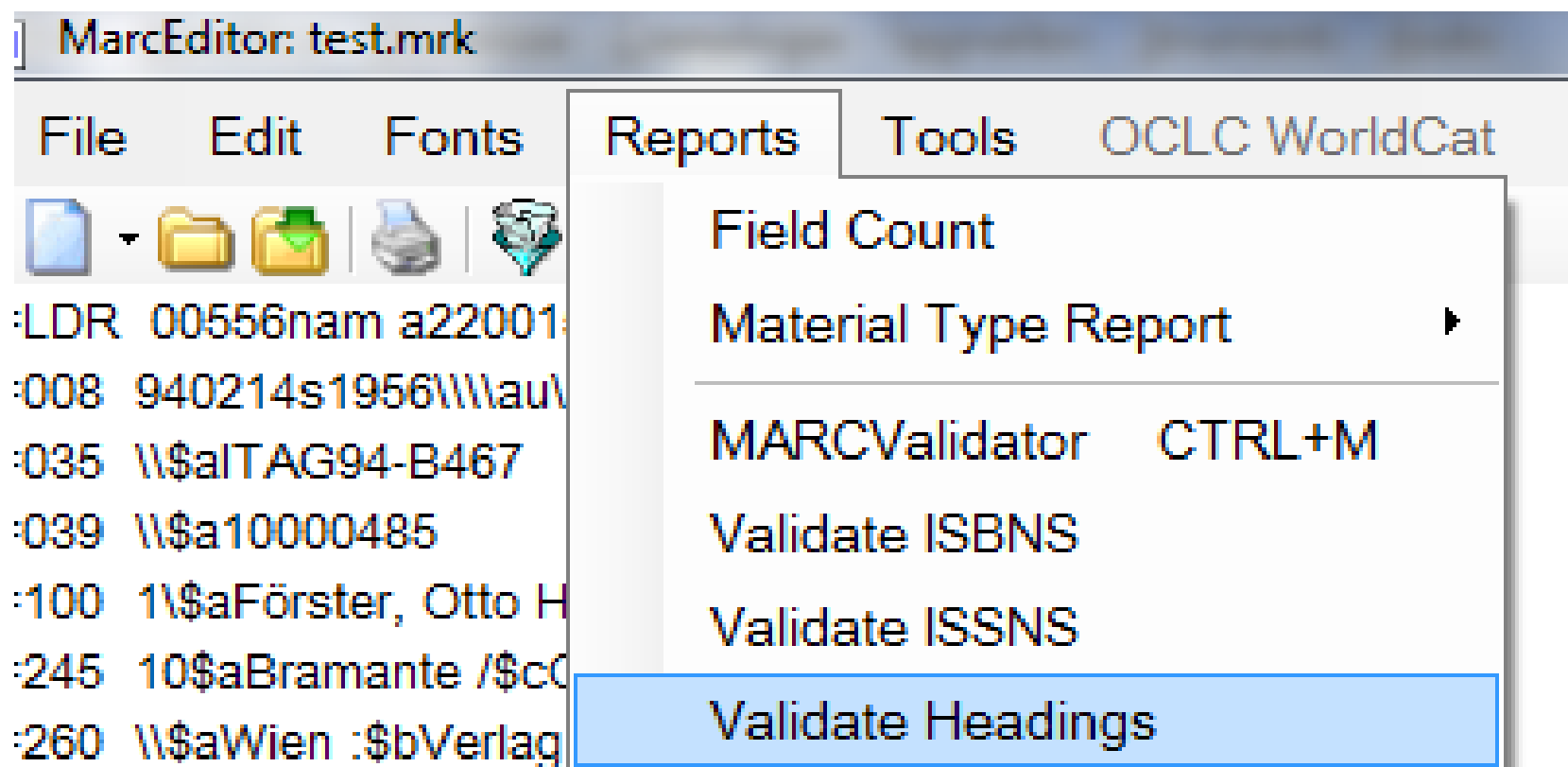
museo
galileo

Istituto e Museo
di Storia della Scienza

5° Incontro GUMARC 21

GUMARC 21
Gruppo Utenti Marc21

Validazione delle intestazioni



museo
galileo

Istituto e Museo
di Storia della Scienza


5° Incontro GUMARC 21

GUMARC 21
Gruppo Utenti Marc21




Validate Headings

The Headings Validation tool can be used to validate 1xx, 6xx, or 7xx fields. The tool utilizes a combination of web and local services to determine if a heading appears in an authorized heading.

Source:
[MarcEditor] 

Generate Brief Personal Name Authorities

Generated Authorities:
C:\Users\tajoli\Documents\laib\gumarc21\auth_valid.mrk 

Authorize 1xx/7xx fields

Authorize 6xx field

Only Process Subfield A

Automatically Correct Variants

Delete the Local Cache

[Save Delimited](#)

orbes.

diske ut



n
guseet i
+
1st
di:

nb

Validation Results:

Process completed in: 1,52384857166667 minutes.

Average Response Time from LC: 1,33824867647059

Total Records: 17

Records with Invalid Headings: 12

1xx Headings Found: 8

6xx Headings Found: 19

7xx Headings Found: 13

1xx Headings Not Found: 1

6xx Headings Not Found: 21

7xx Headings Not Found: 0

1xx Variants Found: 0

6xx Variants Found: 0

7xx Variants Found: 0

Total Unique Headings Queried: 68

Found in Local Cache: 3

Record #0

Heading not found for: Förster, Otto Helmut, 1894-1976

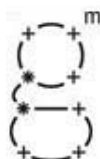
Heading automatically generate for: Förster, Otto Helmut, 1894-1976

Heading not found for: Bramante, Donato, 1444?-1514

Record #2

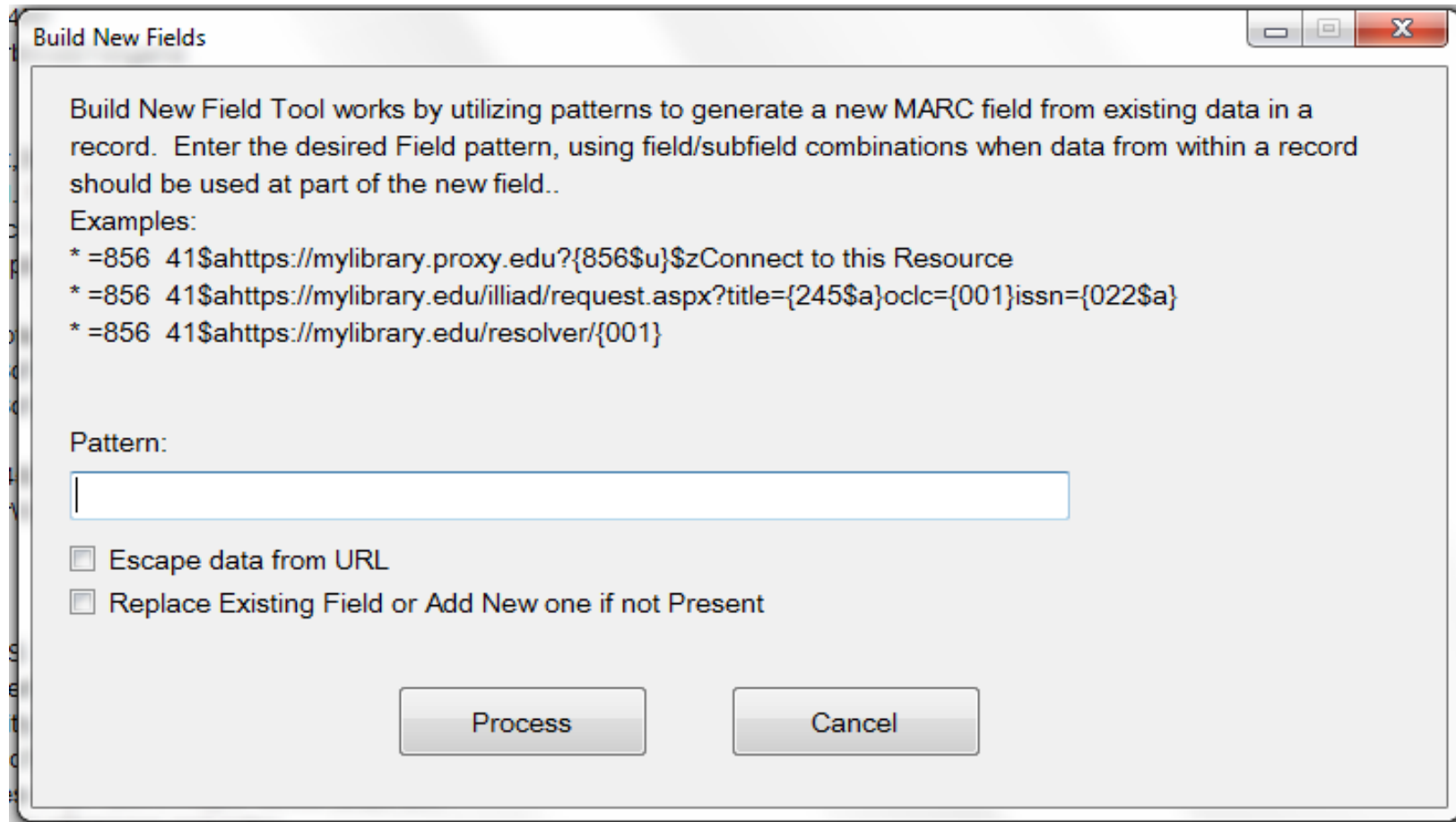
Heading not found for: Excavations (Archaeology)--Italy--Ficana (Extinct city)--Exhibitions

Heading not found for: Ficana (Extinct city)--Exhibitions



Costruisci un nuovo campo

- In Tools -> Build a New Field



Build New Fields

Build New Field Tool works by utilizing patterns to generate a new MARC field from existing data in a record. Enter the desired Field pattern, using field/subfield combinations when data from within a record should be used at part of the new field..

Examples:

- * =856 41\$ahttps://mylibrary.proxy.edu?{856\$u}\$zConnect to this Resource
- * =856 41\$ahttps://mylibrary.edu/illiad/request.aspx?title={245\$a}oclc={001}issn={022\$a}
- * =856 41\$ahttps://mylibrary.edu/resolver/{001}

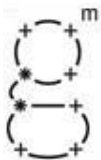
Pattern:

Escape data from URL

Replace Existing Field or Add New one if not Present

Process Cancel

- <http://blog.reeset.net/archives/1782>



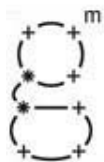
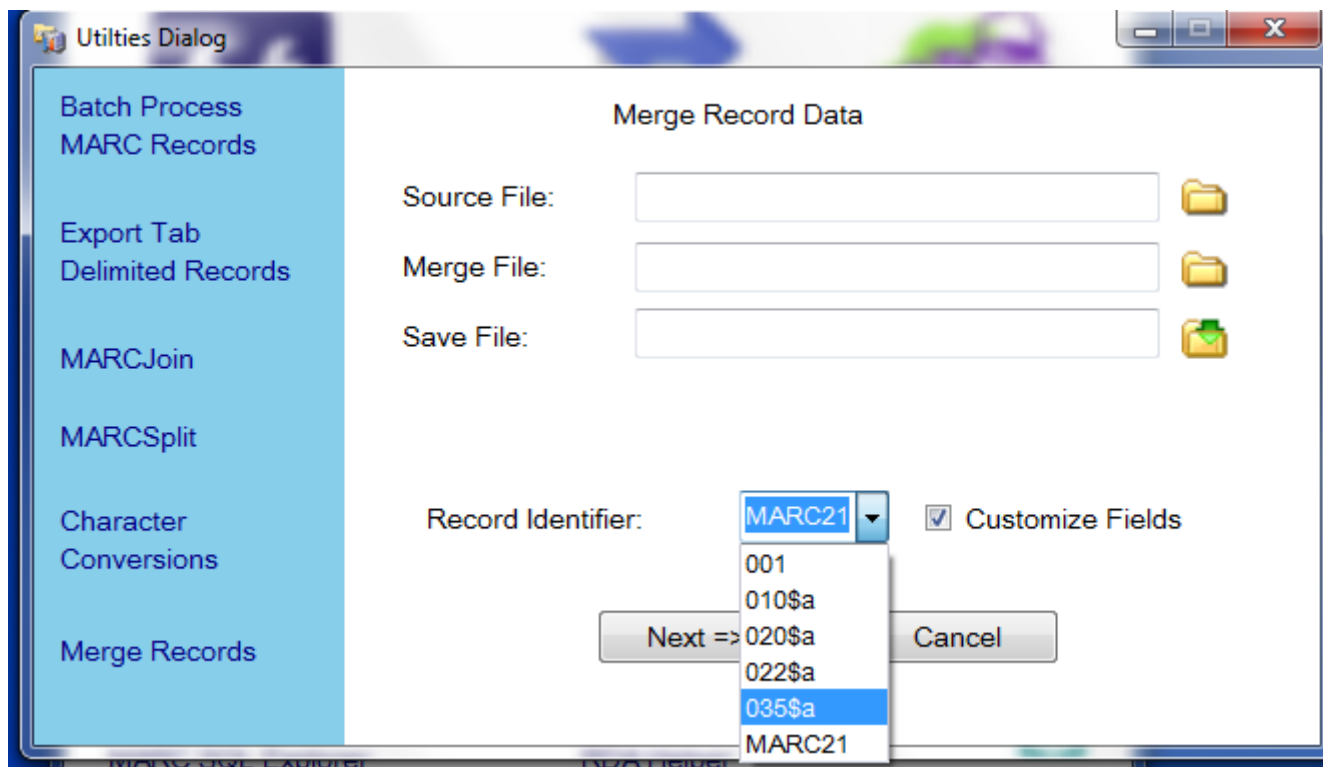
museo
galileo

Istituto e Museo
di Storia della Scienza

5° Incontro GUMARC 21

GUMARC 21
Gruppo Utenti Marc21

Cambiamenti sulla fusione dei records



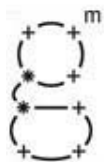
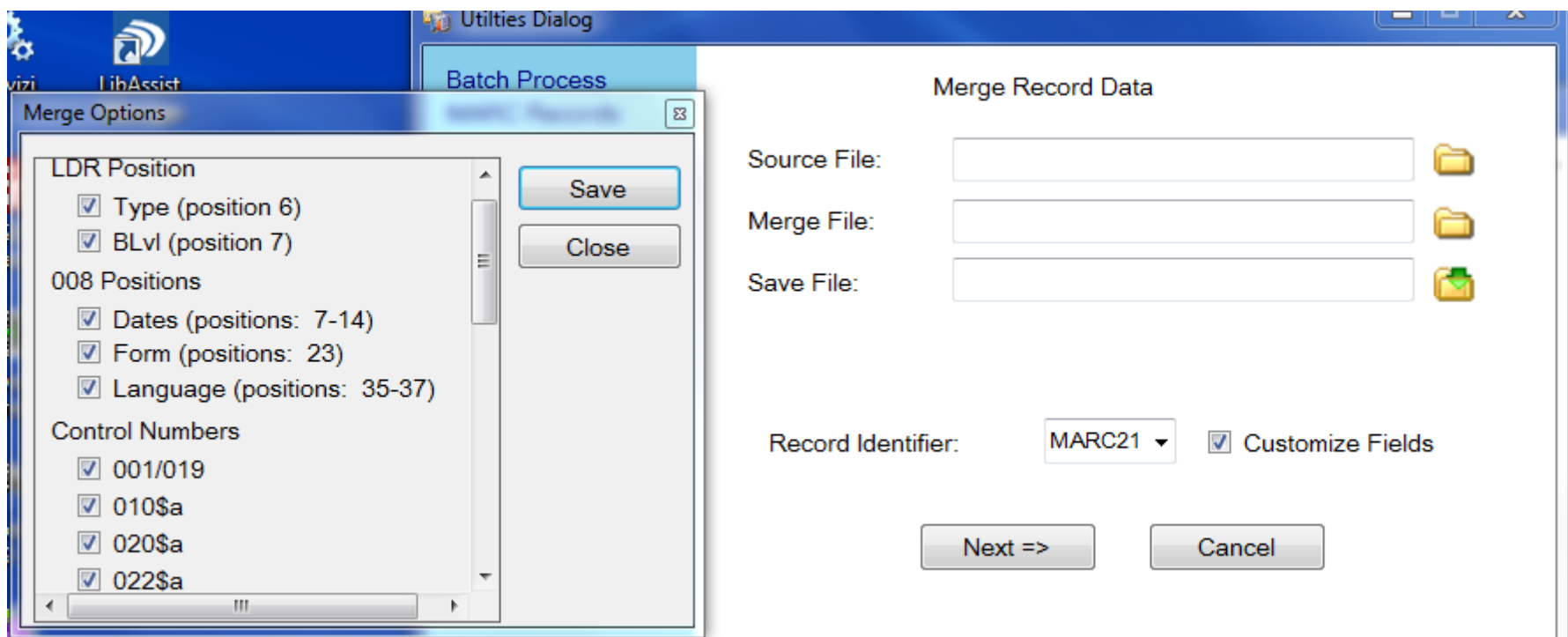
museo
galileo

Istituto e Museo
di Storia della Scienza

5° Incontro GUMARC 21

GUMARC 21
Gruppo Utenti Marc21

Cambiamenti sulla fusione dei records



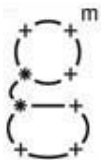
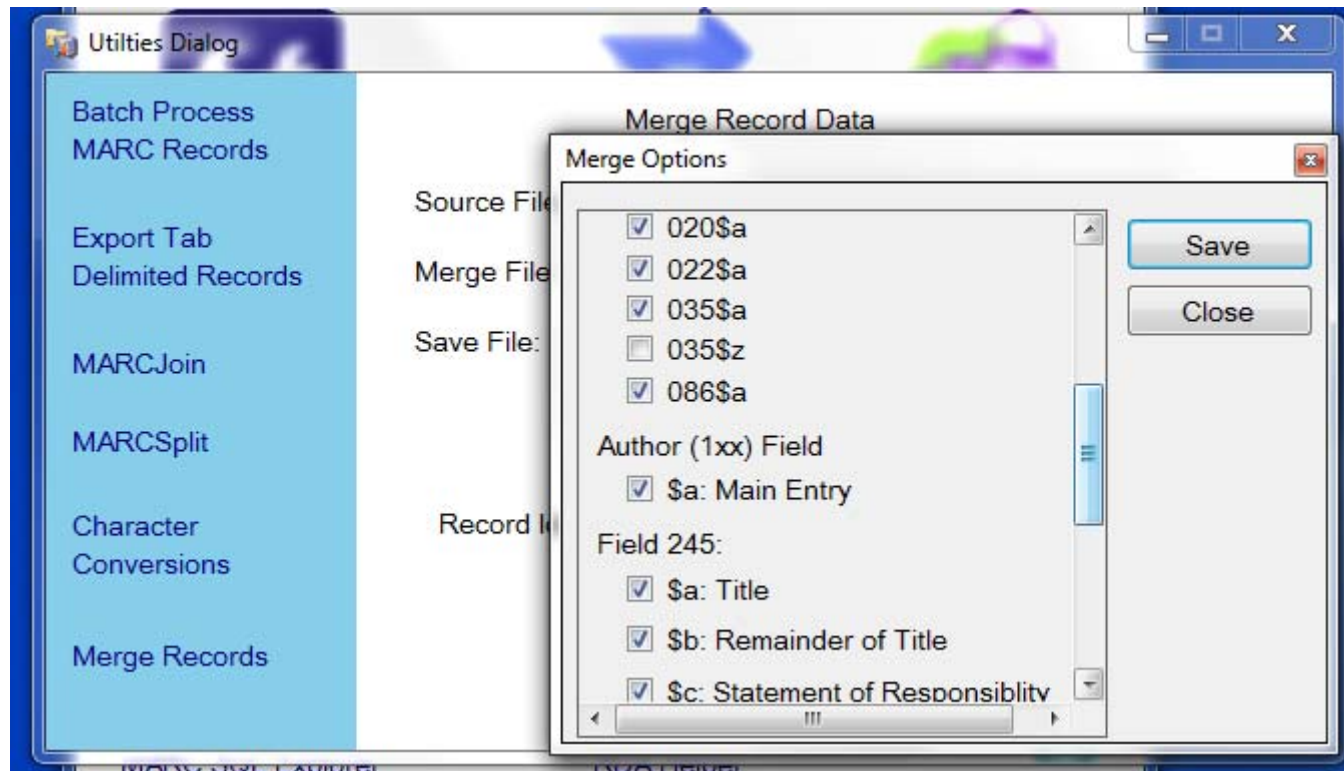
museo
galileo

Istituto e Museo
di Storia della Scienza

5° Incontro GUMARC 21

GUMARC 21
Gruppo Utenti Marc21

Cambiamenti sulla fusione dei records



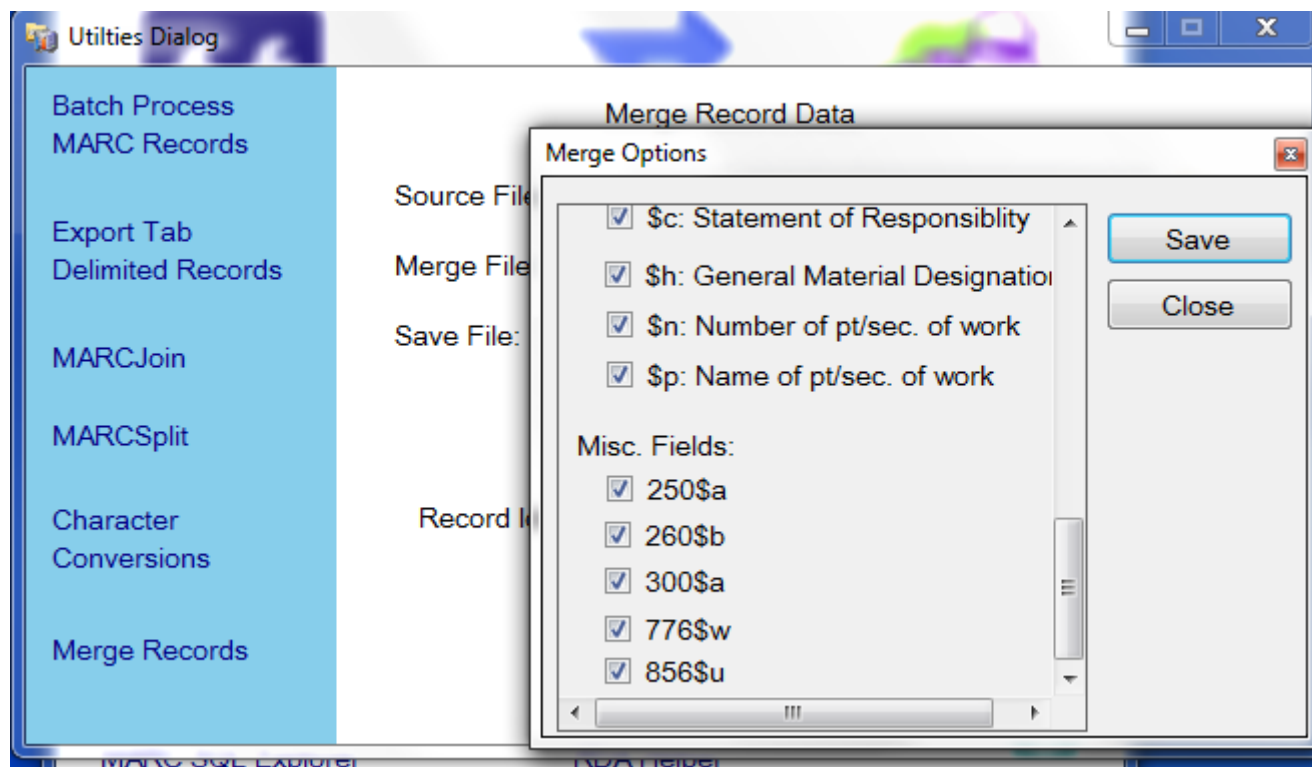
museo
galileo

Istituto e Museo
di Storia della Scienza

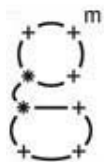
5° Incontro GUMARC 21

GUMARC 21
Gruppo Utenti Marc21

Cambiamenti sulla fusione dei records



- <http://blog.reeset.net/archives/1746>



museo
galileo

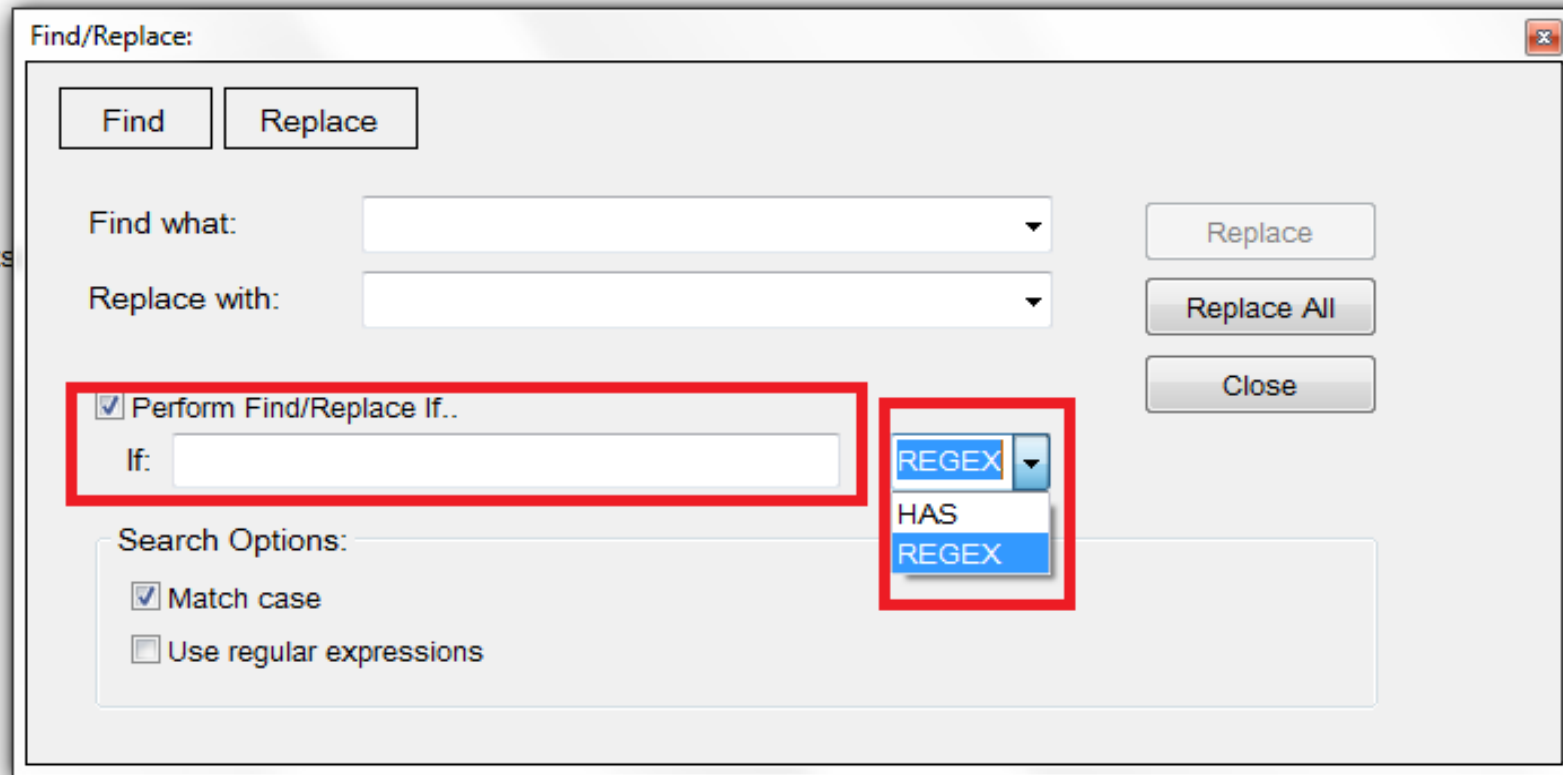
Istituto e Museo
di Storia della Scienza

5° Incontro GUMARC 21

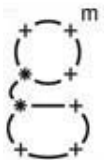
GUMARC 21
Gruppo Utenti Marc21

Miglioramenti per la sostituzione di stringhe

- In Edit -> Replace



- <http://blog.reeset.net/archives/1690>



museo
galileo

Istituto e Museo
di Storia della Scienza

5° Incontro GUMARC 21

GUMARC 21
Gruppo Utenti Marc21

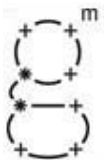
Validare ISBN

- In Reports -> Validate ISBN

ISBN Field Selection

Enter ISBN field (example: 020) or a Field and Subfield combination

OK Cancel



museo
galileo

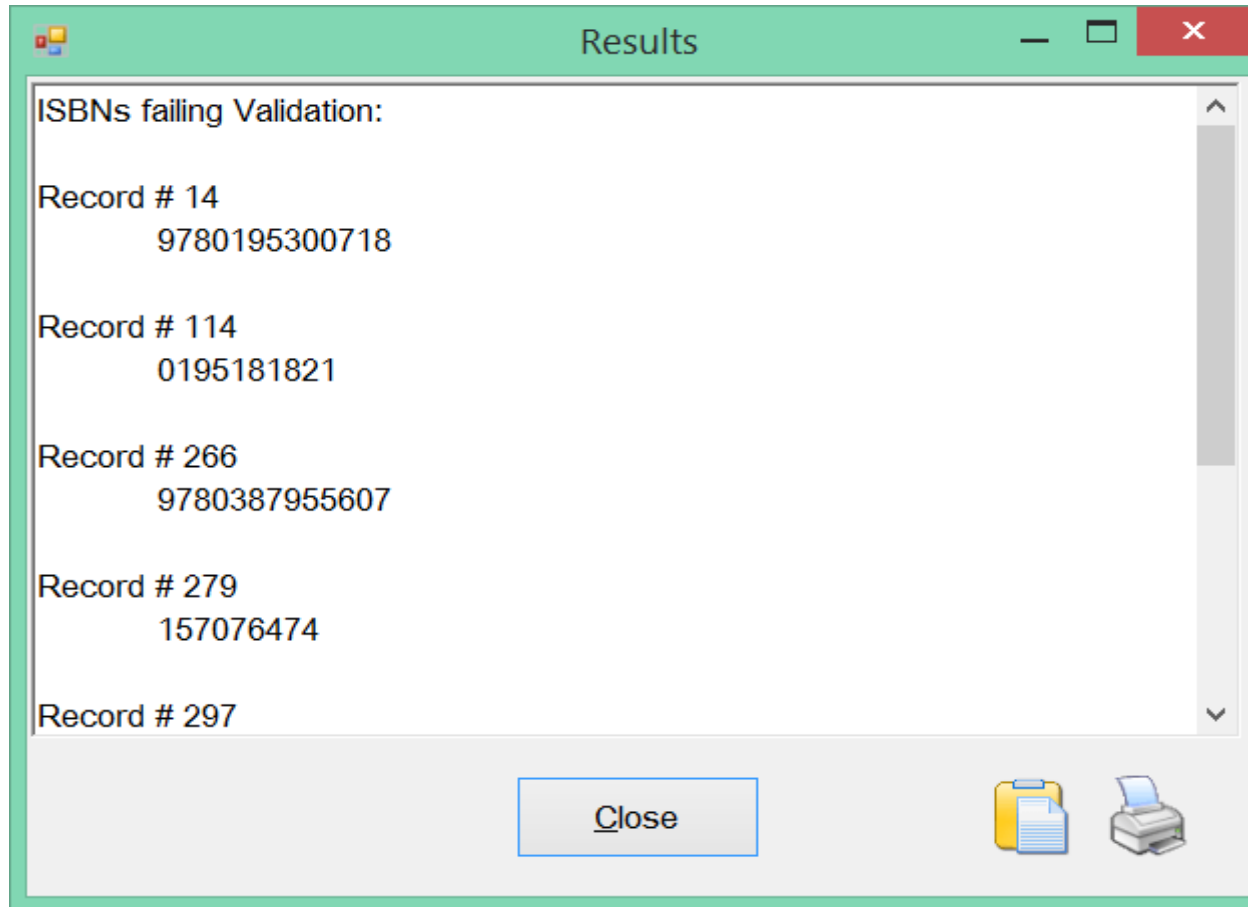
+

Istituto e Museo
di Storia della Scienza

5° Incontro GUMARC 21

GUMARC 21
Gruppo Utenti Marc21

Validare ISBN



- <http://blog.reeset.net/archives/1648>



museo
galileo

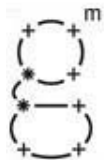
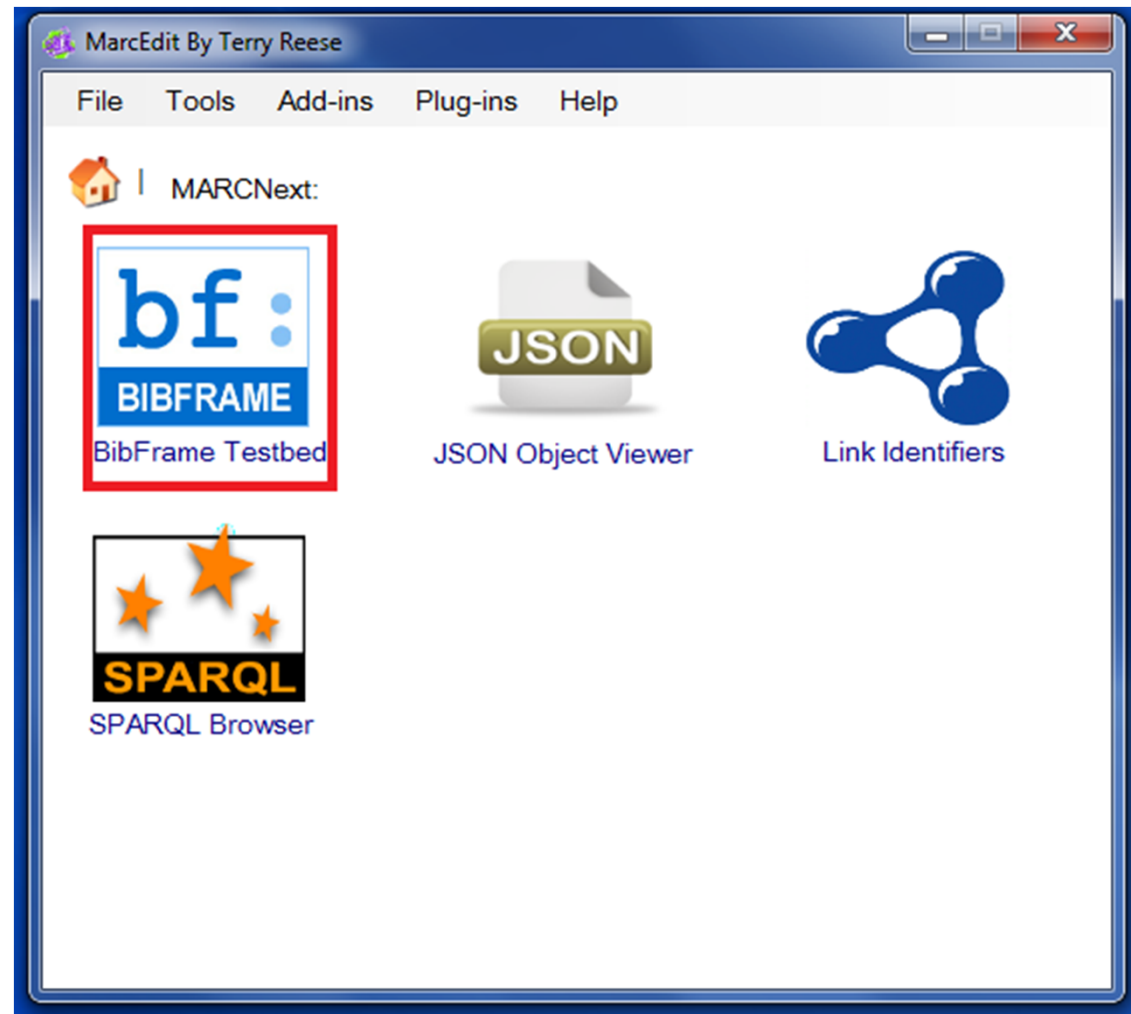
+

Istituto e Museo
di Storia della Scienza

5° Incontro GUMARC 21

GUMARC 21
Gruppo Utenti Marc21

Collaborazione con BibFrame (MARCNext)



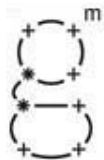
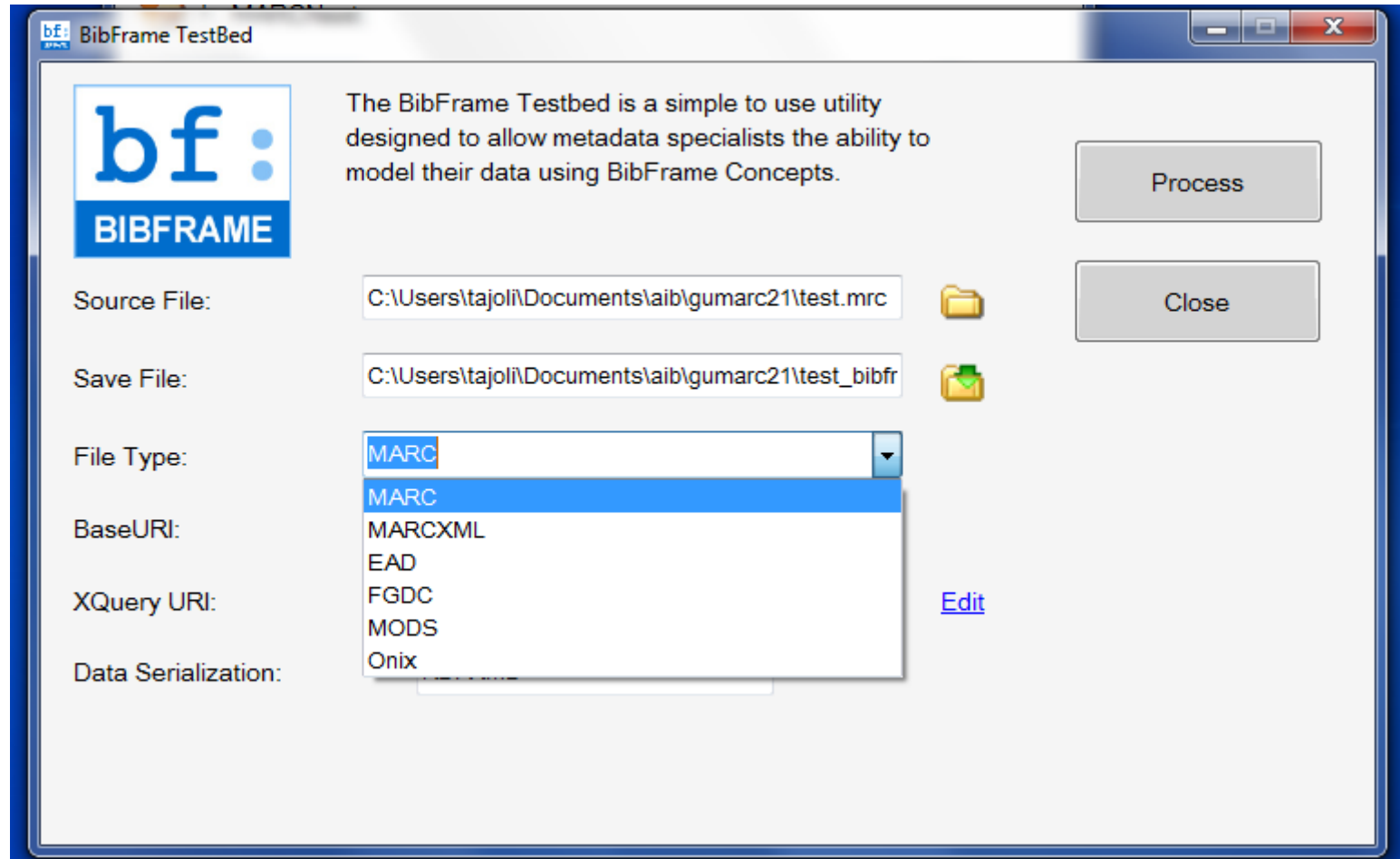
museo
galileo

Istituto e Museo
di Storia della Scienza

5° Incontro GUMARC 21

GUMARC 21
Gruppo Utenti Marc21

Collaborazione con BibFrame (MARCNext)



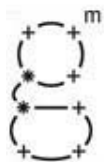
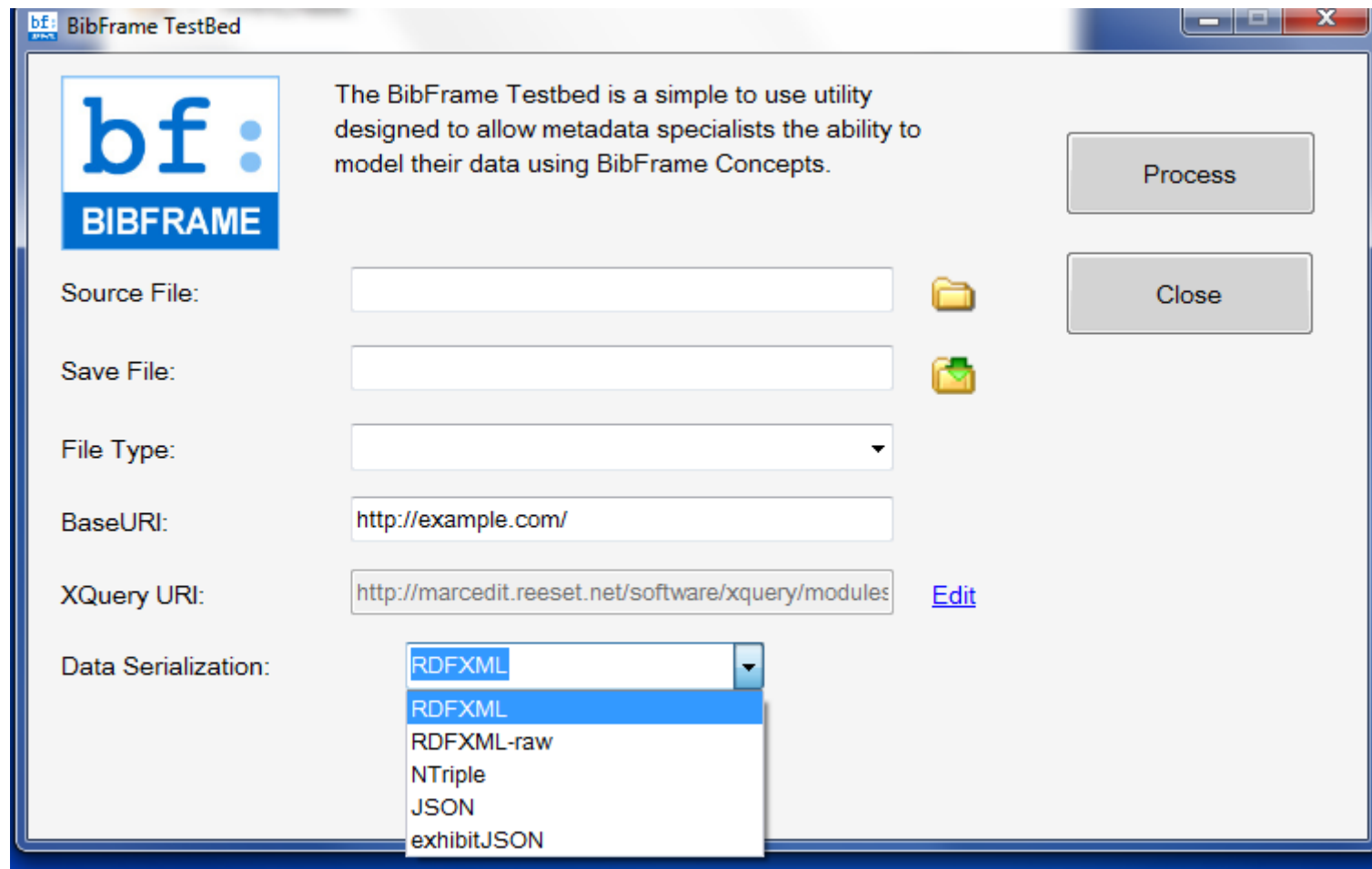
museo
galileo

Istituto e Museo
di Storia della Scienza

5° Incontro GUMARC 21

GUMARC 21
Gruppo Utenti Marc21

Collaborazione con BibFrame (MARCNext)



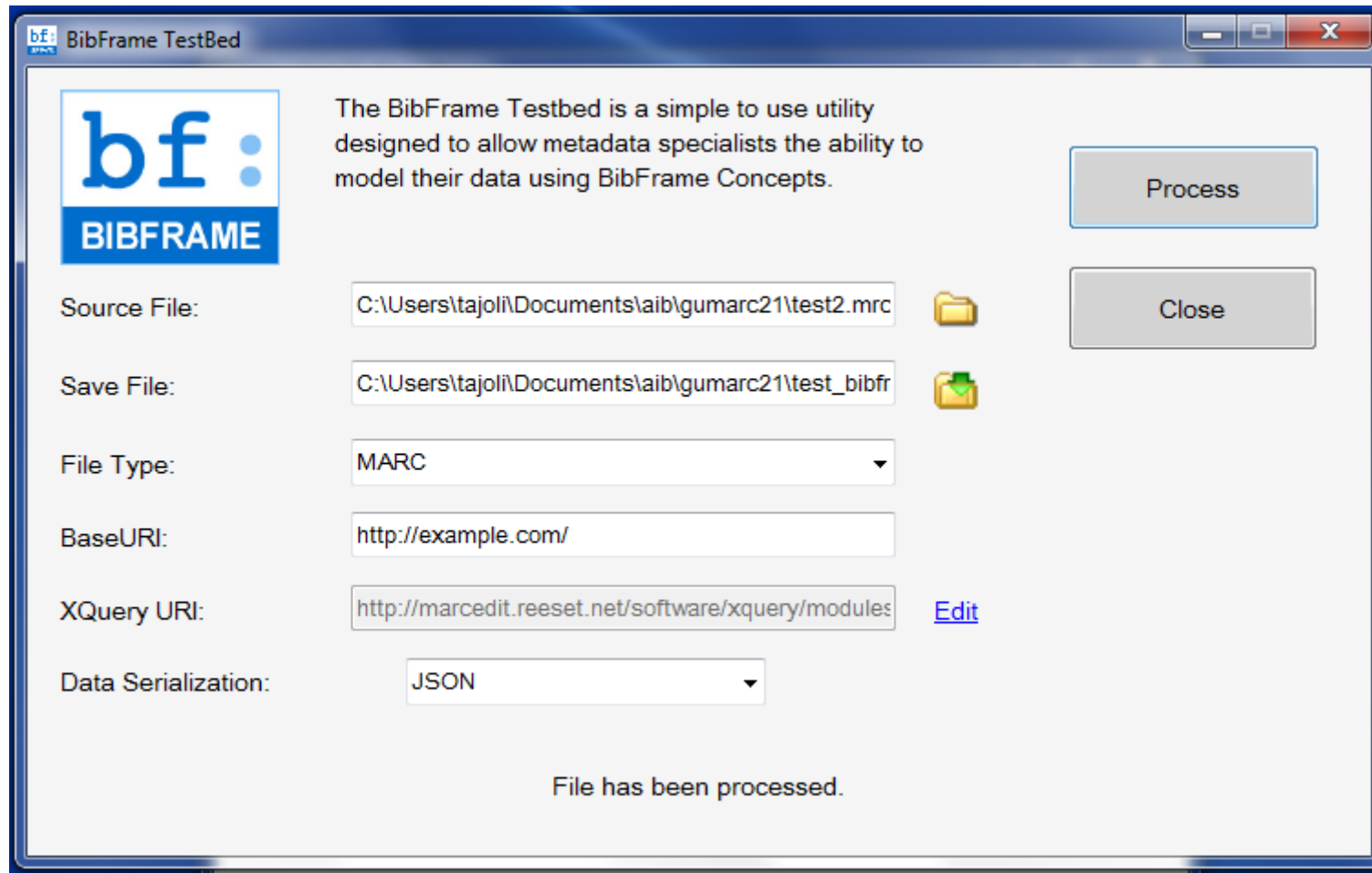
museo
galileo

Istituto e Museo
di Storia della Scienza

5° Incontro GUMARC 21

GUMARC 21
Gruppo Utenti Marc21

Collaborazione con BibFrame (MARCNext)



The screenshot shows the BibFrame TestBed interface. The title bar reads "bf: BibFrame TestBed". On the left is the "bf: BIBFRAME" logo. The main content area contains a description: "The BibFrame Testbed is a simple to use utility designed to allow metadata specialists the ability to model their data using BibFrame Concepts." Below this are several input fields: "Source File:" with the path "C:\Users\tajoli\Documents\laib\gumarc21\test2.mrc" and a folder icon; "Save File:" with the path "C:\Users\tajoli\Documents\laib\gumarc21\test_bibfr" and a save icon; "File Type:" with a dropdown menu set to "MARC"; "BaseURI:" with the text "http://example.com/"; "XQuery URI:" with the text "http://marcedit.reeset.net/software/xquery/modules" and an "Edit" link; and "Data Serialization:" with a dropdown menu set to "JSON". On the right side, there are two buttons: "Process" and "Close". At the bottom center, a status message reads "File has been processed."



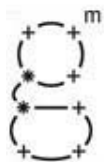
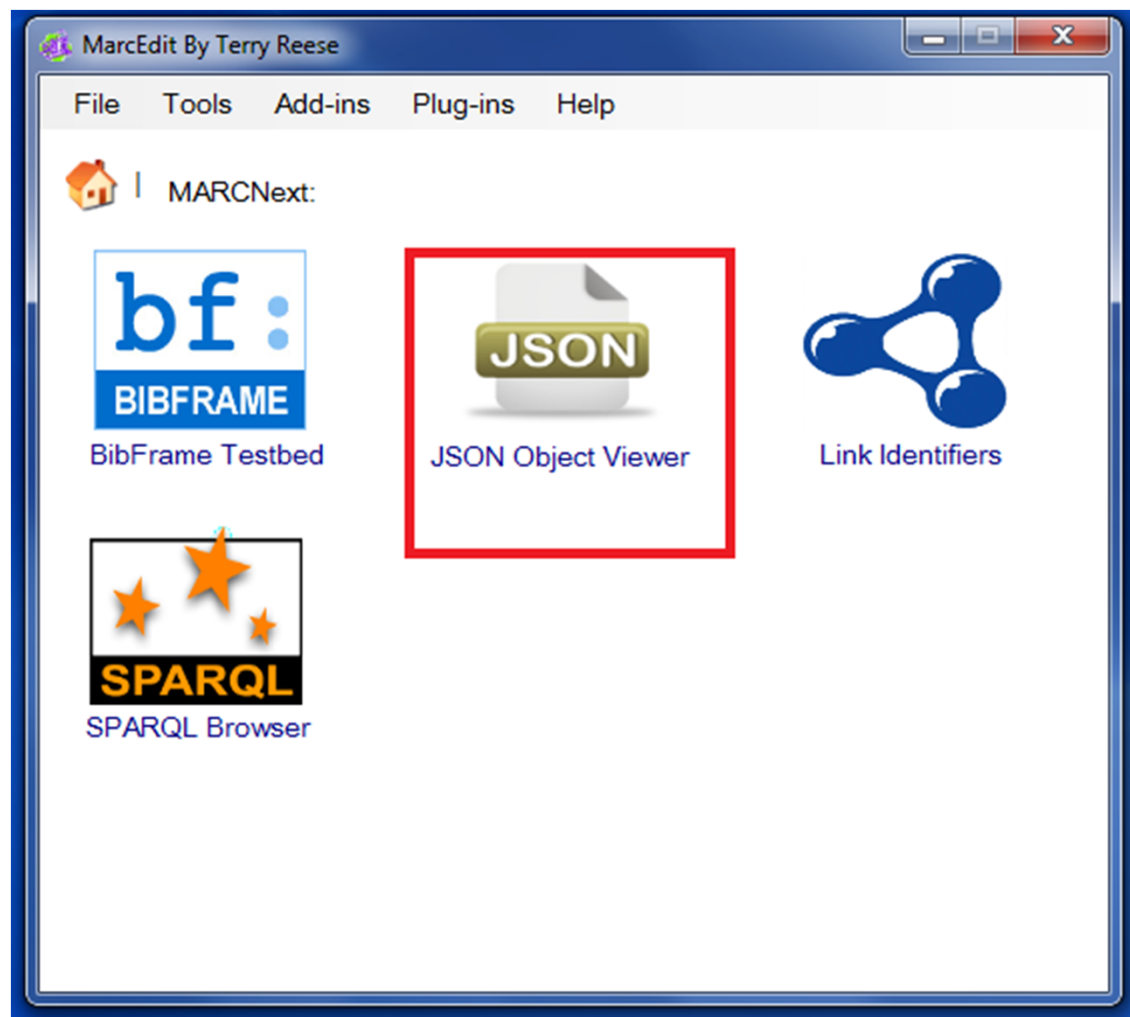
museo
galileo

Istituto e Museo
di Storia della Scienza

5° Incontro GUMARC 21

GUMARC 21
Gruppo Utenti Marc21

Collaborazione con BibFrame (MARCNext)



museo
galileo

+

Istituto e Museo
di Storia della Scienza

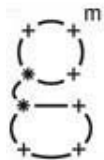
5° Incontro GUMARC 21

GUMARC 21
Gruppo Utenti Marc21

Collaborazione con BibFrame (MARCNext)

```
"<http://bibframe.org/vocab/providerDate>":  
  [  
    {  
      "value": "1983",  
      "type": "literal"  
    }  
  ],  
"<http://bibframe.org/vocab/providerName>":  
  [  
    {  
      "value": "_:bnode1000159234",  
      "type": "bnode"  
    }  
  ],  
"<http://bibframe.org/vocab/providerPlace>":  
  [  
    {  
      "value": "_:bnode1004159234",  
      "type": "bnode"  
    }  
  ]
```

Can not add property <http://bibframe.org/vocab/authorizedAccessPoint> to Newtonsoft.Json.Linq.JObject. Property with the same name already exists on object.



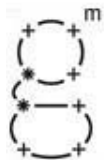
museo
galileo

Istituto e Museo
di Storia della Scienza

5° Incontro GUMARC 21

GUMARC 21
Gruppo Utenti Marc21

Collaborazione con BibFrame (MARCNext)



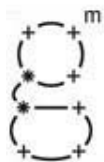
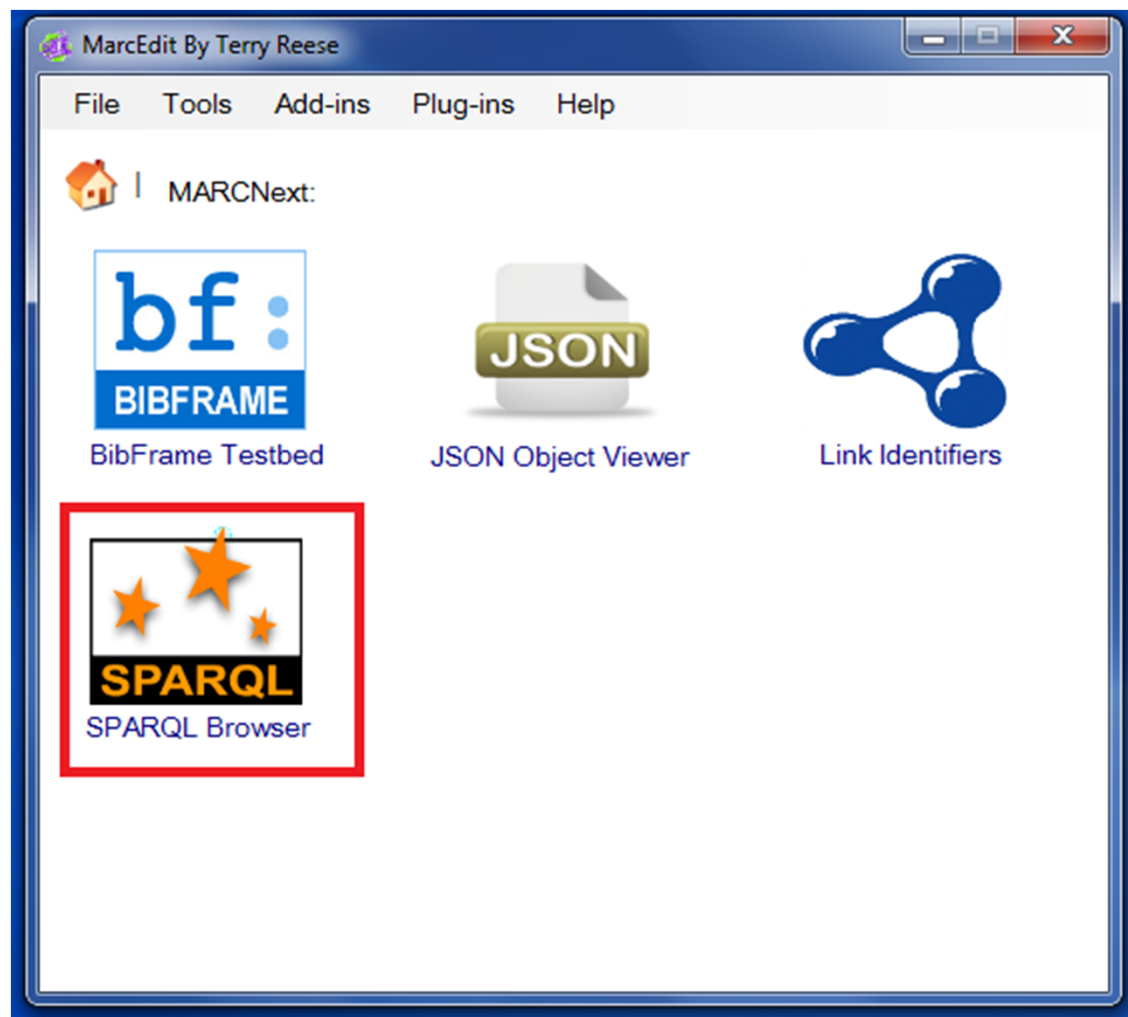
museo
galileo

Istituto e Museo
di Storia della Scienza

5° Incontro GUMARC 21

GUMARC 21
Gruppo Utenti Marc21

Collaborazione con BibFrame (MARCNext)



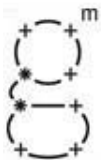
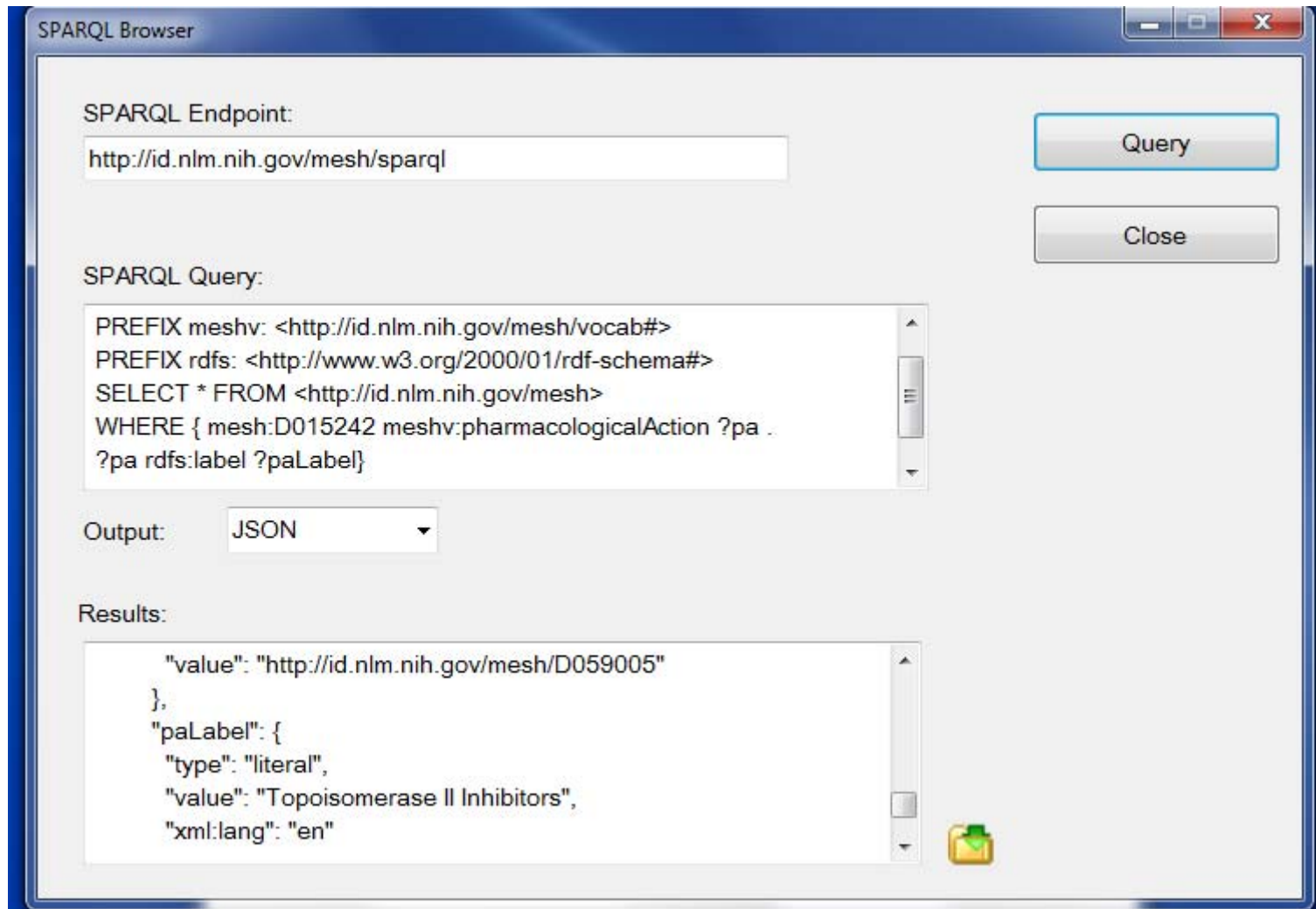
museo
galileo

Istituto e Museo
di Storia della Scienza

5° Incontro GUMARC 21

GUMARC 21
Gruppo Utenti Marc21

Collaborazione con BibFrame (MARCNext)



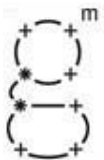
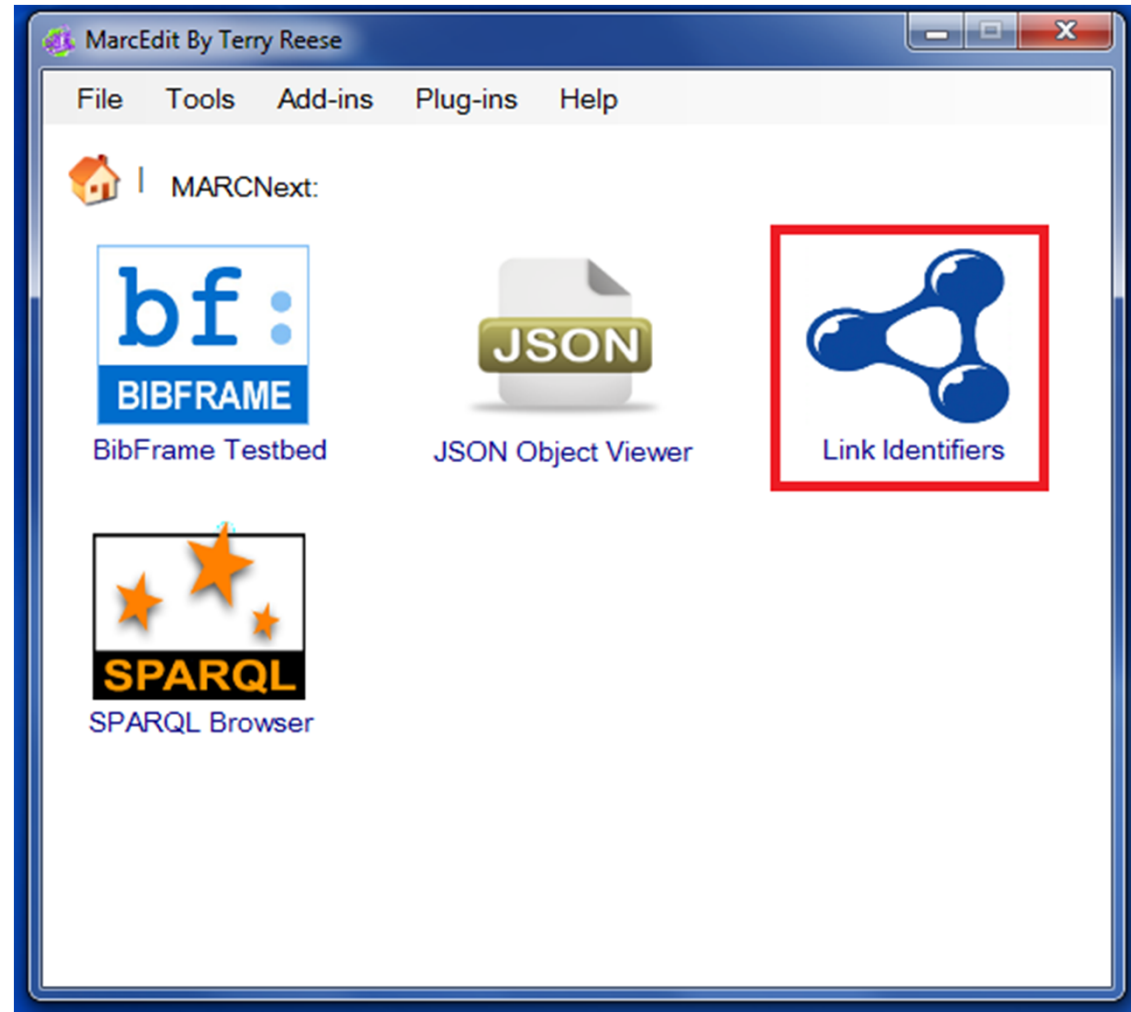
museo
galileo

Istituto e Museo
di Storia della Scienza

5° Incontro GUMARC 21

GUMARC 21
Gruppo Utenti Marc21

Collaborazione con BibFrame (MARCNext)



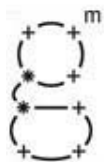
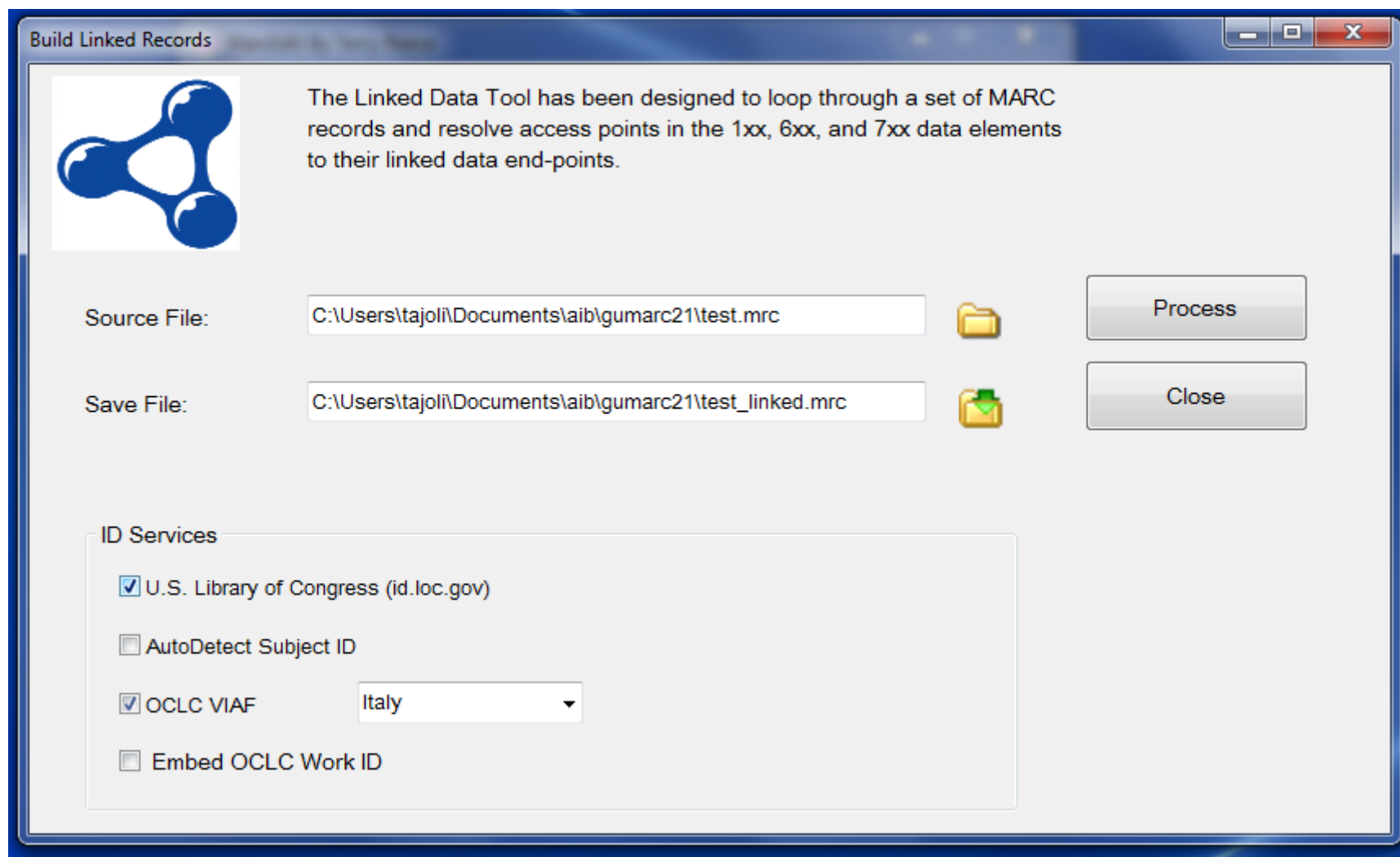
museo
galileo

Istituto e Museo
di Storia della Scienza

5° Incontro GUMARC 21

GUMARC 21
Gruppo Utenti Marc21

Collaborazione con BibFrame (MARCNext)



museo
galileo

Istituto e Museo
di Storia della Scienza

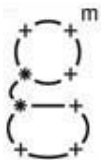
5° Incontro GUMARC 21

GUMARC 21
Gruppo Utenti Marc21

Collaborazione con BibFrame (MARCNext)

[...]
=504 \aContains bibliographic references.
=650 \0\$9344013\$aRhetoric, Ancient\$xHistory and criticism
=650 \0\$9342420\$aRhetoric, Renaissance\$0<http://id.loc.gov/authorities/subjects/sh96011194>
=650 \0\$9257055\$aRhetoric, Ancient\$xStudy and teaching\$xHistory\$yTo 1500
=650 \0\$9281144\$aLiterary form\$xHistory\$yTo 1500.\$0<http://id.loc.gov/authorities/subjects/sh2008106688>
=700 \aPittaluga, Stefano\$0<http://viaf.org/viaf/79058913>
=830 \0\$pPubblicazioni del D.AR.FI.CL.ET. Terza serie ;\$vn. 241.

=LDR 00546nam a2200157 a 4500
=001 29843
=003 ItRURBS
=005 20150619132930.0
=008 010709s1965\\it\\r\\00010\ita\d
=039 \a10896517\$b12632818
=040 00\$aIT-RoISA
=100 1\aD'Anna, Giovanni,\$d1929-\$968039\$0<http://viaf.org/viaf/113751992>
=245 10\$aAlcuni aspetti della polemica antiepicurea di Cicerone /\$cGiovanni D'Anna.
[...]



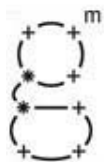
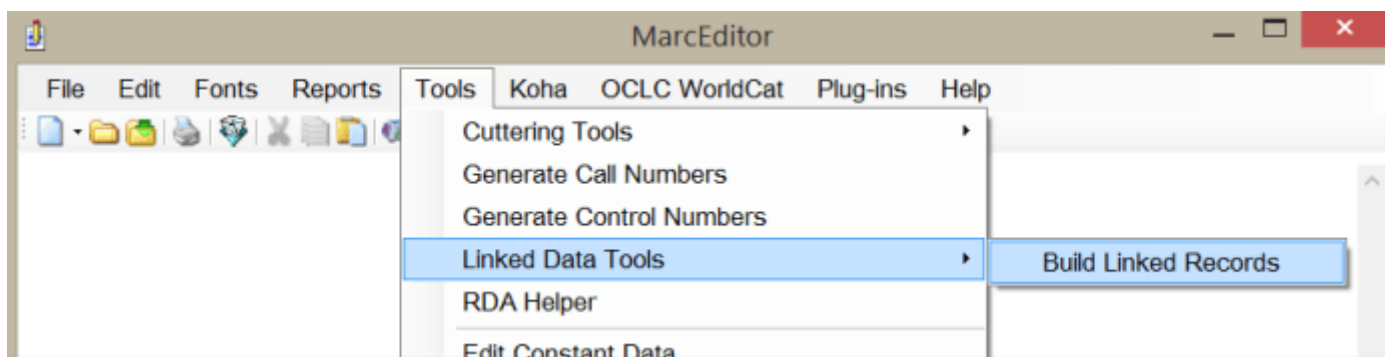
museo
galileo

Istituto e Museo
di Storia della Scienza

5° Incontro GUMARC 21

GUMARC 21
Gruppo Utenti Marc21

Collaborazione con BibFrame (MARCNext)



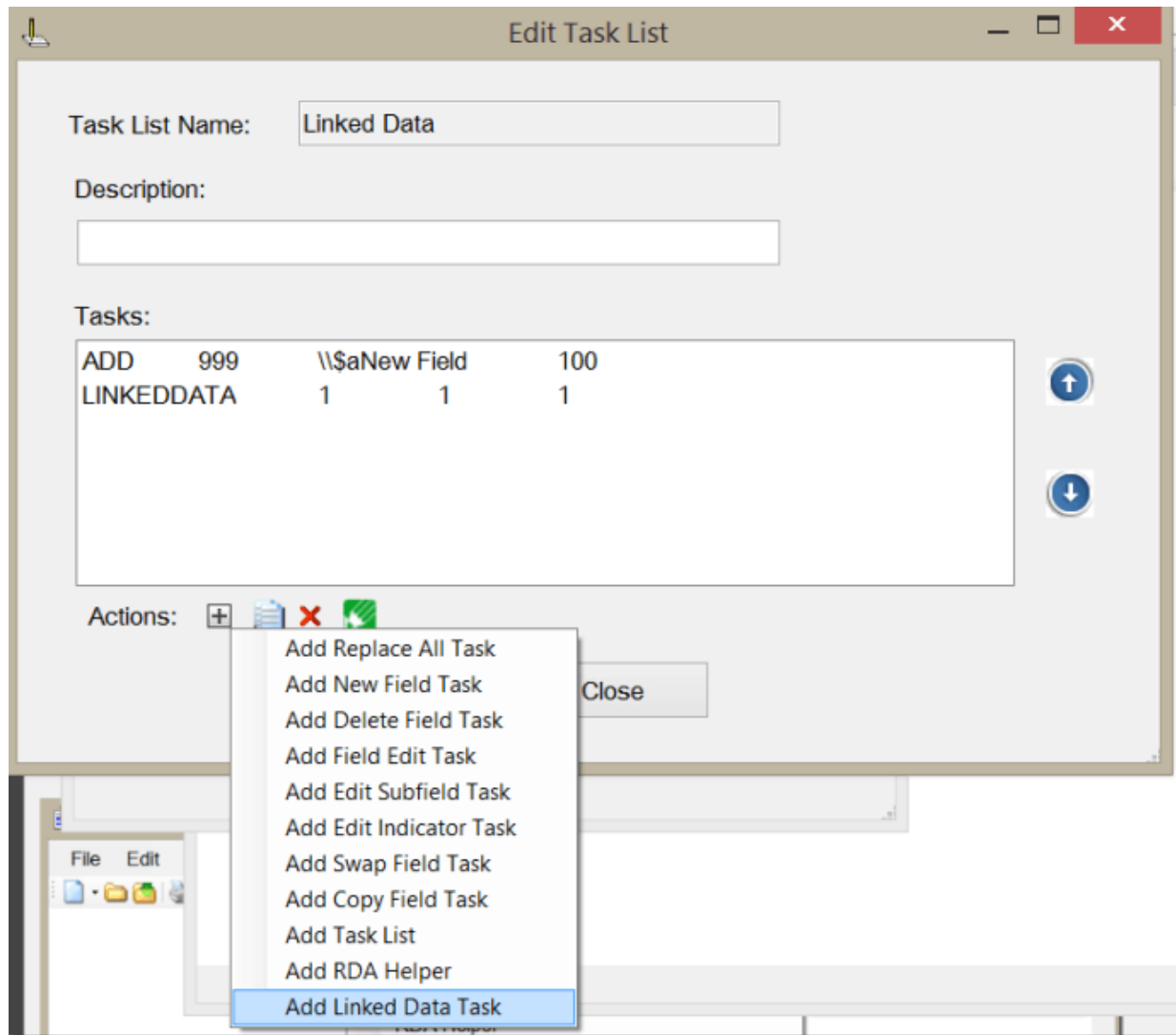
museo
galileo

Istituto e Museo
di Storia della Scienza

5° Incontro GUMARC 21

GUMARC 21
Gruppo Utenti Marc21

Collaborazione con BibFrame (MARCNext)



museo
galileo

Istituto e Museo
di Storia della Scienza

5° Incontro GUMARC 21

GUMARC 21
Gruppo Utenti Marc21

Collaborazione con BibFrame (MARCNext)

- BibFrame
 - <http://blog.reeset.net/archives/1359>
- JSON Object Viewer
 - <http://blog.reeset.net/archives/1363>
- SPARQL
 - <http://blog.reeset.net/archives/1632>
 - <http://id.nlm.nih.gov/mesh/>
 - <http://hhs.github.io/meshrdf/sample-queries.html>
- Linked Identifier
 - <http://blog.reeset.net/archives/1657>



museo
galileo

Istituto e Museo
di Storia della Scienza

5° Incontro GUMARC 21

GUMARC 21
Gruppo Utenti Marc21

La traduzione automatica

- Basata su Translation Service di Microsoft
- “Buona abbastanza” per iniziare
- Avrebbe bisogno di interventi umani
- Attualmente aggiornamento troppo frequente
- Non chiaro algoritmo di lavoro
- Links:
 - <http://blog.reeset.net/archives/1613>
 - <http://blog.reeset.net/archives/1606>



museo
galileo

Istituto e Museo
di Storia della Scienza

5° Incontro GUMARC 21

GUMARC 21
Gruppo Utenti Marc21



Lo strumento di dati collegati è stato progettato per scorrere un insieme di record MARC e risolvere i punti di accesso nel 1xx, 6xx, 7xx elementi di dati e loro dati collegato un end-point.

File di origine:



Salvare il File:



The Linked Data Tool has been designed to loop through a set of MARC records and resolve access points in the 1xx, 6xx, and 7xx data elements to their linked data end-points.

Source File:

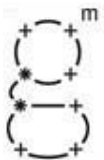


Save File:



Nuovi video

- Sono 5 video che coprono tutto MarcEdit
 - <http://marcedit.reeset.net/marcedit-101-workshop>
- Traduzione automatica di dati Marc con un plugin
 - <http://blog.reeset.net/archives/1616>
- IL plugin di LibHub
 - <http://blog.reeset.net/archives/1609>
 - <http://www.libhub.org/> [descrizione progetto]
- Automazione di Task
 - <http://blog.reeset.net/archives/1144>



museo
galileo

Istituto e Museo
di Storia della Scienza

5° Incontro GUMARC 21

GUMARC 21
Gruppo Utenti Marc21

Nuovi video

- Integrazione diretta con Koha
 - <http://blog.reeset.net/archives/1125>
 - <http://blog.reeset.net/archives/1121>
 - <http://blog.reeset.net/archives/1119>
- Uso di RDA Helper
 - <https://www.youtube.com/watch?v=cqLMPp9vZVM>
- Tutti i video (canale Youtube)
 - <https://www.youtube.com/user/tpreese>



museo
galileo

Istituto e Museo
di Storia della Scienza

5° Incontro GUMARC 21

GUMARC 21
Gruppo Utenti Marc21

Supporto a Mac

- Nel blog Terry parla estesamente dello sviluppo per Mac
- Hardware finanziato dalla comunità
- Ora a livello incompleto ma funzionante
- Links:
 - <http://blog.reeset.net/archives/1665>
 - <http://blog.reeset.net/archives/1696>
 - <http://blog.reeset.net/archives/1706>
 - <http://blog.reeset.net/archives/1728>
 - <http://blog.reeset.net/archives/1785>
 - <http://blog.reeset.net/archives/1791>



museo
galileo

Istituto e Museo
di Storia della Scienza

5° Incontro GUMARC 21

GUMARC 21
Gruppo Utenti Marc21



DOMANDE ?



museo
galileo

Istituto e Museo
di Storia della Scienza

5° Incontro GUMARC 21

GUMARC 21
Gruppo Utenti Marc21